

Series **85P5-1** Product Overview

Straight-Line Action Clamp

Models: **85P5-1**

Application:

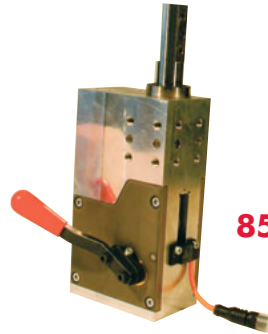
Accurate positioning of workpiece in jigs. Piston rod is locked in the extracted position. Here the piston rod can be used for cases of counter supporting for clamps.

Features:

- Compact Design
- High accuracy of positioning
- Lateral and front-face mounting areas
- Stroke 40mm
- Inductive sensing module
- Toggle-locked in extracted position



85P5-104B8000



85P5-104B80H0

Series **85P5-1B8** Technical Information

Model no..	Pushing force at 6 bar N [lbs]	Retracting force at 6 bar N [lbs]	Holding force N [lbs]	Pressure max bar [psi]	Piston Ø mm [in]	Stroke mm [in]	Weight Kg [lbs]	Air consumption per double stroke at 6 bar dm ³ [ft ³]
85P5-104000000	2000 [449]	1000 [225]	5000 [1124]	6 [87]	50 [1.97]	40 [1.57]	3,8 [8.36]	1,1 [0.04]
85P5-1040000H0	2000 [449]	1000 [225]	5000 [1124]	6 [87]	50 [1.97]	40 [1.57]	4,0 [8.80]	1,1 [0.04]
85P5-104B800H								

Remark: Extracting force and retracting force shown in this chart are only available with the last 2 mm stroke at extracted position. In the other range of the stroke the forces will be approximately 30 % of value in the chart.

Order no. code for **85P5-1.....**

Example order no.: **85P5 - 1 04 B8 00 0 0 - K** K = ceramic coated pin

85P5-1 = base model without sensing system

Base models

04 = plunger adapter NAAMS-Standard

Plunger variations

00 = without sensing system 8AD-036-1

B8 = with sensing system 8EA-033-2 connecting plug M12x1

Sensing system

00 = without accessory parts

E1 = External guide 82ZB-010-2

00 = external guide with locking unit 82ZB-026-1

External Guide

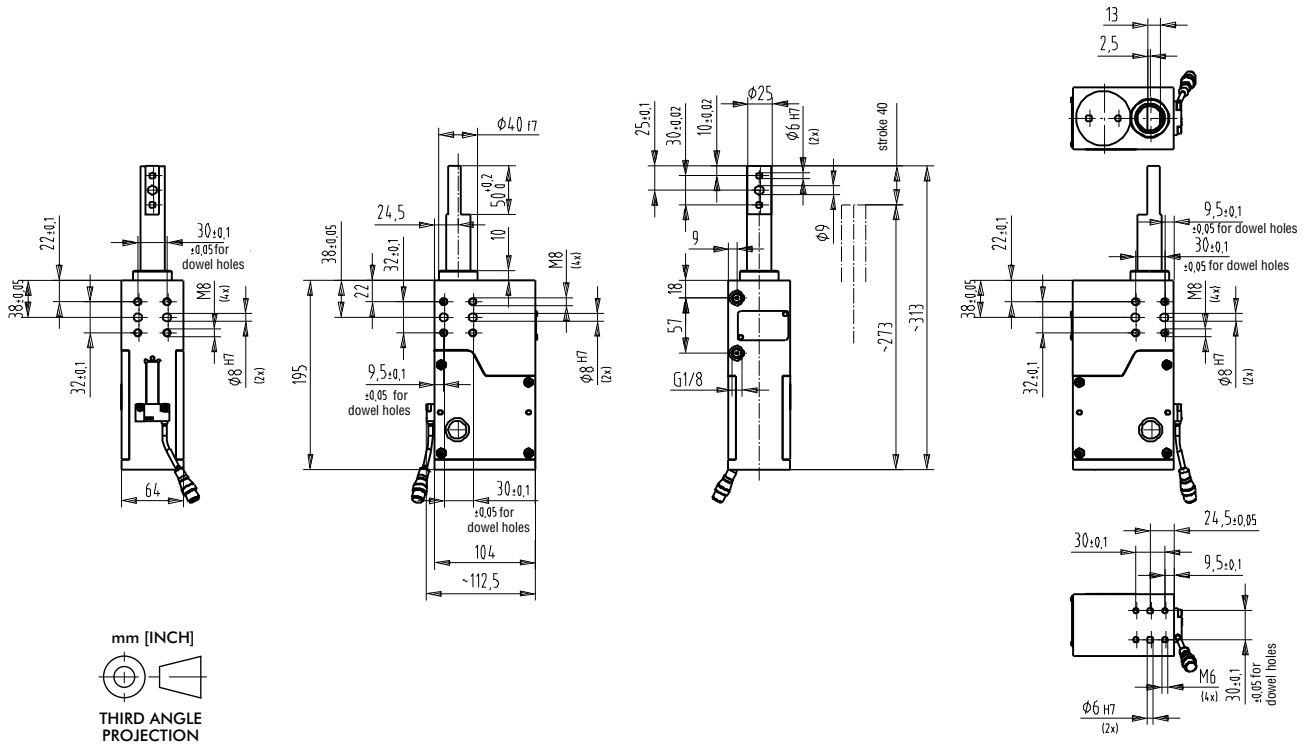
0 = without handlever

H = with handlever

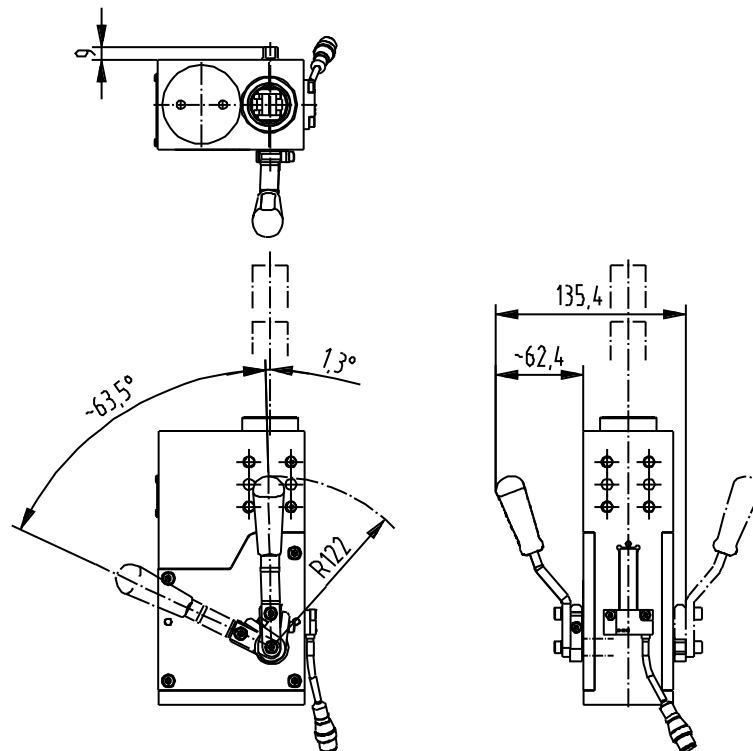
0 = without stroke limiter

Series 85P5-1 Standard Clamp Dimensions



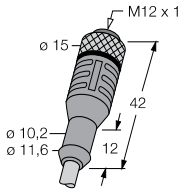
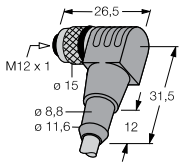
85P5-1 without hand lever



85P5-1 with hand lever (additional dimensioning)



Series **85P5-1** Accessories

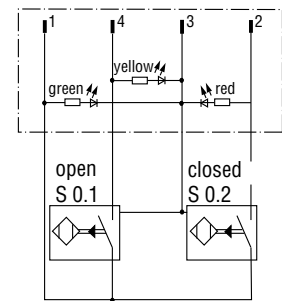
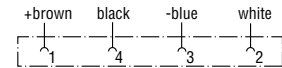
Specifications	Order no.
<p>External guide (use for external centering pins)</p> 	<p>82ZB-010-2</p>
<p>Bellows (use for external pins with locking for preventing from unintended moving)</p> 	<p>82ZB-026-1</p>
<p>Connecting cable (1 connector socket & 5 m cable)</p> <p>Connector socket M12x1 straight, 5-pin</p>  <p>Connector socket M12x1 90 angular, 4-pin</p> 	<p>8EL-002-1</p> <p>8EL-003-1</p>

Wiring diagram of electrical sensing system

Sensing system immune to interference from d.c. arc welding and a.c. arc welding

Inductive design:

- **B8** Connector M12x1 w/lead



Major spare parts for **85P5-1**

Specifications	Order no.
Sensing B8	8EA-033-2
Seal-kit cylinder	8PW-050-1-00
Hand lever-kit	8KB-032-1