

Series 860, 861, 890, 891, 1000, 1001 Product Overview

Features:

- High holding torque
- Long cycle life
- Mounting flexibility on all four sides
- Clamping arm in horizontal or vertical clamping position
- Toggle action mechanism
- Standard cylinder features a magnetic piston for end position sensing

Application:

Clamping, holding, gripping and positioning of metal sheets and other parts in jigs and handling systems.

Key areas of application:

General mechanical engineering.



860
890
1000
Horizontal clamping position



861
891
1001
Vertical clamping position



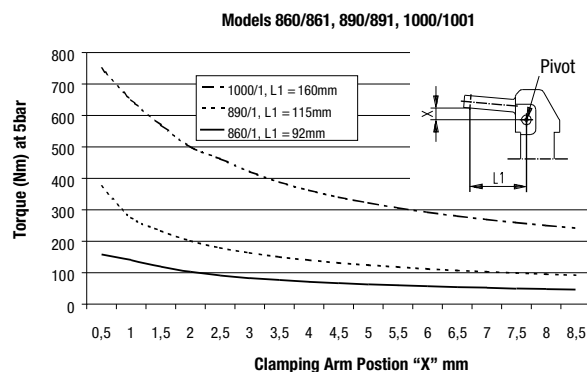
Sensor for magnetic field sensing:
BIM-IKE-AP
(2 pieces required. Order separately)

Series 860, 861, 890, 891, 1000, 1001 Technical Information

Model	Max. holding torque Nm [ft lb]	Max. clamping torque at 5 bar [72 psi] Nm [ft lb]	Cylinder Ø mm [in]	Opening angle	Weight kg [lbs]
860	[479]	[120]	[2.00]	96°	[8.58]
861	650	160	50,8	119°	3,9
890	[922]	[275]	[2.50]	96°	[16.06]
891	1250	375	63,5	119°	7,3
1000	[1475]	[460]	[3.25]	96°	[29.70]
1001	2000	625	82,5	119°	13,5

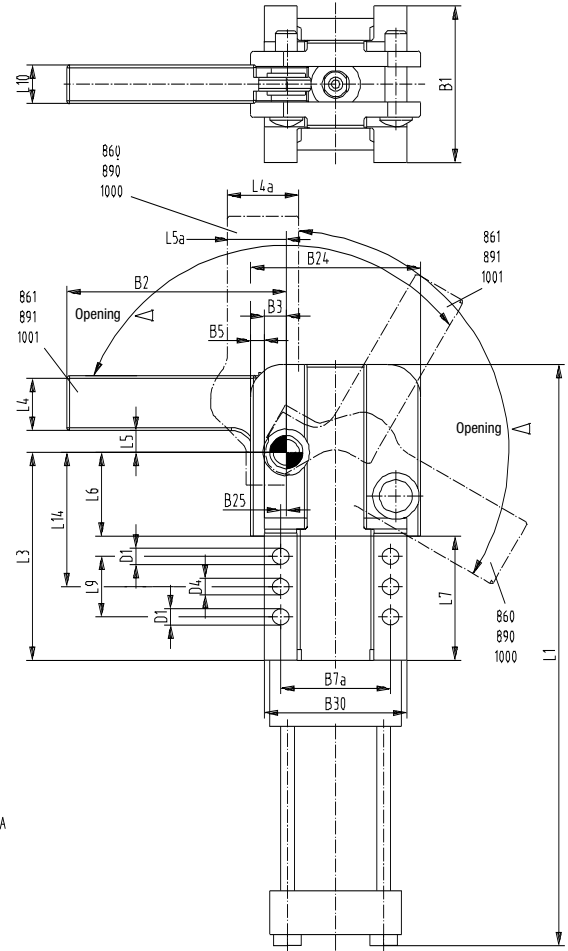
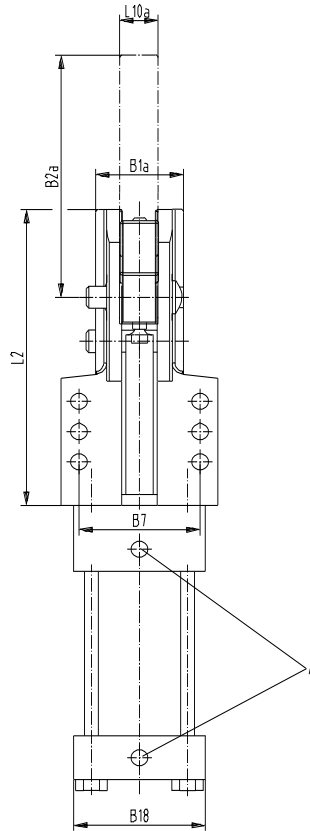
Spare Parts:

Model	Seal Kit	Cylinder
860	8610100	865133-MR
861		865132-MR
890	8910100	895133-MR
891		895132-MR
1000	10010100	1005134-MR
1001		1005133-MR



Series 860, 861, 890, 891, 1000, 1001 Standard Clamp Dimensions

mm [INCH]
THIRD ANGLE PROJECTION



Power by compressed air, max. 6 bar
Operation with oil-free air is permissible.

Information for machining of clamp arm: Steel 1.0726

Model	A	B1	B1A	B2	B2A	B3	B5	B7	B7A	B18	B24	B25	B30
860	G1/8	[2.94]	[1.75]	-	[5.44]	[0.41]	[0.25]	[2.31]	[2.19]	[2.5]	[3.31]	[0.09]	[2.81]
861		74,7	44,5	[4]	138,2	10,4	6,4	58,7	55,6	63,5	84,1	2,3	71,4
890	G1/8	[3.56]	[2]	-	[6.57]	[0.5]	[0.31]	[2.76]	[2.5]	[3]	[3.87]	[0.13]	[3.25]
891		90,4	50,8	5.06	166,9	12,7	7,9	70,1	63,5	76,2	98,3	3,3	82,6
1000	G1/8	[4.5]	[2.62]	-	[9]	[0.63]	[0.44]	[3.5]	[3.5]	[3.75]	[5.38]	[0.13]	[4.5]
1001		114,3	66,5	7	228,6	16	11,2	88,9	88,9	95,3	136,7	3,3	114,3

Model	ØD1	ØD4	L1	L2	L3	L4	L4A	L5	L5a	L6	L7	L9	L10	L10a	L14
860	[0.34]	[0.31]	[12.44]	[5.75]	[4.06]	-	[1.12]	--	[0.69]	[1.44]	[2.5]	[1.25]	[0.62]	[0.62]	[2.5]
861	8,6	7,9	316	146,1	103,1	[1.13]	-	[0.4]	--	36,6	63,5	31,8	15,7	15,7	63,5
890	[0.41]	[0.38]	[13.37]	[6.75]	[4.75]	-	[1.25]	-	[0.84]	[1.75]	[2.65]	[1.38]	[0.81]	[0.81]	[3.06]
891	10,4	9,7	339,6	171,5	120,7	[1.25]	-	[0.5]	--	44,5	67,3	35,1	20,6	20,6	77,7
1000	[0.53]	[0.5]	[17.51]	[9.25]	[6.25]	-	[1.75]	-	[1.37]	[2.25]	[3.96]	[2]	[1]	[1]	[3.75]
1001	13,5	12,7	444,8	235	158,8	[1.75]	-	[0.88]	--	57,2	100,6	50,8	25,4	25,4	95,3