

Series 82E50-1, 82E63-1 Product Overview (Note: Last time in catalog)

- Automation power clamps, narrow design, without hand lever
- Models: 82E50-1....0..
82E63-1....0..

Features:

- weld immune sensing switches
- toggle action mechanism
- long life cycle
- high holding torques
- two mounting areas (front and back)
- narrow design

Application:

- Clamping, holding, gripping and positioning of metal sheets and other parts, mainly in jigs and handling systems.

Key areas of application:

- Automotive manufacturing, mass production, jig and general mechanical engineering.



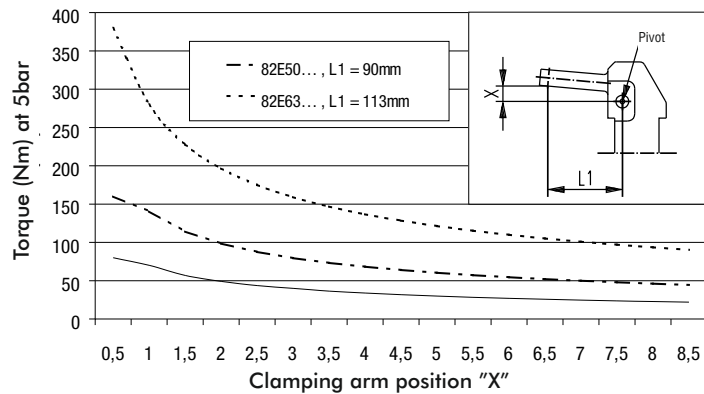
82E50-101....
82E63-101....
Horizontal clamping position



82E50-141....
82E63-141....
Vertical clamping position

Model		Standard opening angle	Max. holding torque Nm [lb ft]	Clamping torque at 5 bar Nm [lb ft]	Clamping arm variant	Clamping position	Cylinder Ø mm [in]	Air consumption per double stroke at 5 bar dm ³ [ft ³]	Weight kg [lb]
w/o end pos. sensing	w/ end pos. sensing Connector M12x1, fixed inductive								
82E50-1010000	82E50-101C500	135°	800 [590]	160 [118]	central	horizontal	50 [1.97]	2,2 [0.08]	4,0 [8.80]
82E50-1410000	82E50-141C500	96°	800 [590]	160 [118]	central	vertical	50 [1.97]	2,2 [0.08]	4,0 [8.80]
82E63-1010000	82E63-101C500	135°	1500 [1107]	380 [280]	central	horizontal	63 [2.48]	3,8 [0.13]	6,0 [13.2]
82E63-1410000	82E63-141C500	92°	1500 [1107]	380 [280]	central	vertical	63 [2.48]	3,8 [0.13]	6,0 [13.2]

Models 82E40..., 50..., 63...



Accessories

Specification	Order no. for			
	82E50	length of spacer	82E63	length of spacer
Opening angle limitation spacer		L [mm]		L [mm]
120°	8CE-058-12	7,2	8CE-078-12	8,4
105°	8CE-056-12	14,4	8CE-076-12	15,9
96° (standard for 82E50-141...)	8CE-012-12	19,1	-	-
92° (Standard for 82E63-141...)	-	-	8CE-013-12	19,0
90°	8CE-054-12	21,9	8CE-074-12	24,6
75°	8CE-051-12	29,5	8CE-071-12	33,0
60°	8CE-049-12	36,3	8CE-069-12	40,6
45°	8CE-047-12	42,8	8CE-067-12	47,1
30°	8CE-045-12	49,8	8CE-065-12	54,5

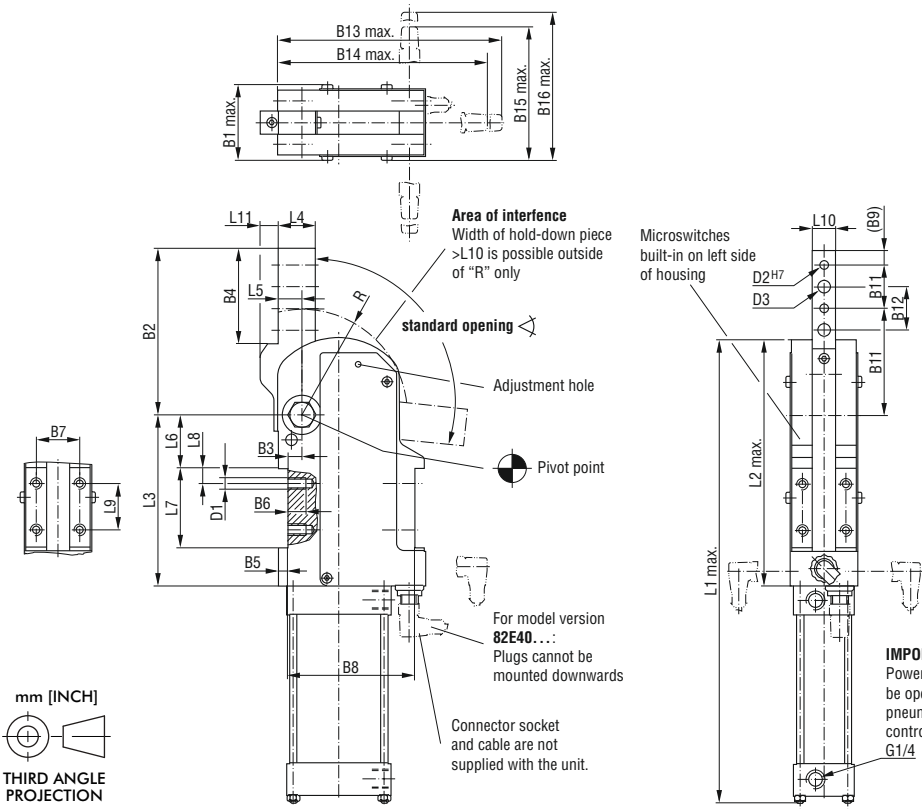
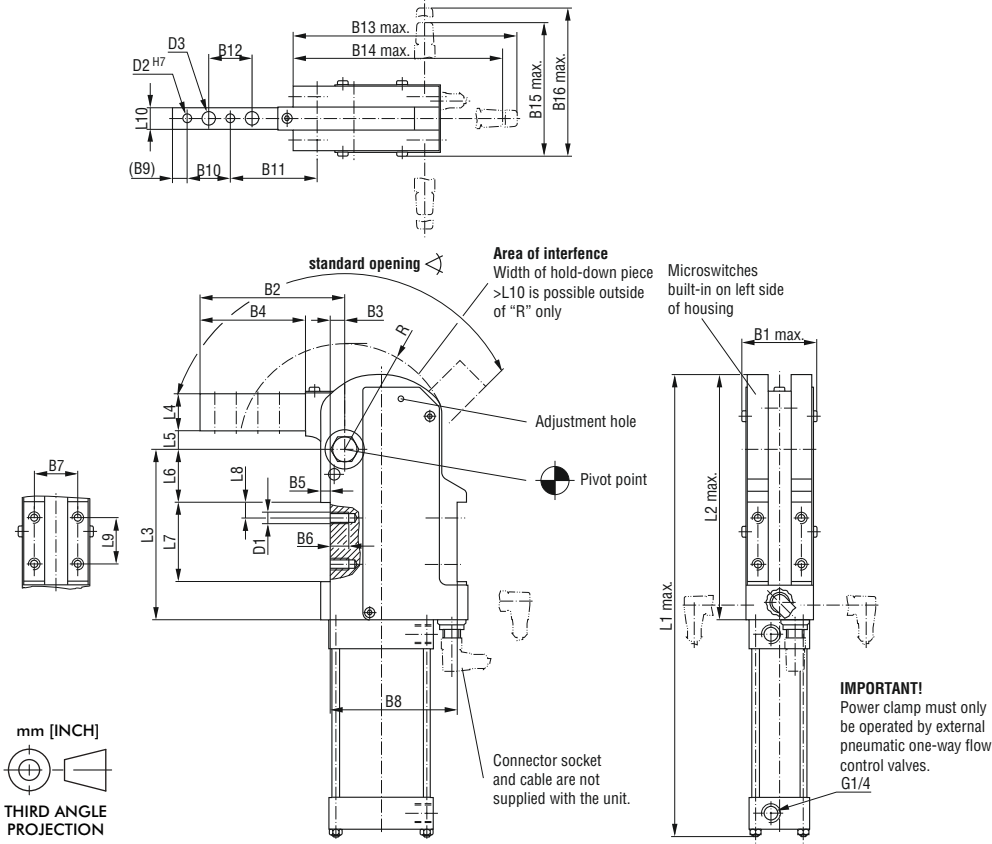
Connector cable (1 connector socket & 5 m cable)				
for C0 sensing system Connector socket, M12x1 straight, 5-pin		8EL-002-1		8EL-002-1
Connector socket, M12x1 angular, 5-pin		8EL-006-1		8EL-006-1
for C5 sensing system Connector socket, M12x1 straight, 5-pin		8EL-002-1		8EL-002-1
Connector socket, M12x1 angular, 4-pin		8EL-003-1		8EL-003-1

Shim for clamping arm for 82E50 and 82E63		Model	A1	A2	D2	D3	B9	B10	B12	L10
		Attention: Width L10 of Shims has to be reduced in some cases by customer	82ZB-SH5001	65	0,1					
	82ZB-SH5002		0,2							
	82ZB-SH5005		0,5		6,5	9	10	30	30	16
	82ZB-SH5010		1,0							
	82ZB-SH5020		2,0							
	82ZB-SH5050		5,0							

Major spare parts

Specification	Order no. for	
	82E50-1....0..	82E63-1....0..
Cylinder	8PW-023-2	8PW-024-2
Seal kit	8PW-023-1-00	8PW-024-1-00
C0 sensing system (micro switch, obsolete version) (connector plug M12x1, fixed)	82E50-071-2	82E60-071-2
C5 sensing system (connector plug M12x1, fixed)	8EA-004-2	8EA-005-2

Series 82E50-1, 82E63-1 Standard Clamp Dimensions



Series 82E50-1, 82E63-1 Technical Information

Model	Standard opening angle	Clamping arm variant	Clamping position	Piston Ø	Connection G	B1 max.	B2	B3 ±0,1	B4	B5 +1	B6	B7 ±0,1	B8	B9	B10 ±0,02	B11 ±0,1
82E50-101__00	135°	central	horizontal	50	G1/4	56	100	10	75	6,5	13	30	88	10	30	60
82E50-141__00	96°	central	vertical	50	G1/4	56	113	10	69	6,5	13	30	88	10	30	73
82E63-101__00	135°	central	horizontal	63	G1/4	61	123	13	75	7,5	13	35	93	10	30	83
82E63-141__00	92°	central	vertical	63	G1/4	61	135	13	71,5	7,5	13	35	93	10	30	95

Model	B12 ±0,2	B13 max.	B14 max.	B15 max.	B16 max.	D1	D2 H7 Ø	D3 Ø	L1 max.	L2 max.	L3	L4 ±0,1	L5 ±0,2	L6 ±0,05	L7 ±0,1	L8	L9 ±0,1	L10 -0,1	L11
82E50-101__00	30	155	145	96	106	M8	6	9	322	170	118	25	13	36,5	55	11	32	16	—
82E50-141__00	30	155	145	96	106	M8	6	9	322	170	118	25	17,5	36,5	55	11	32	16	11
82E63-101__00	30	173	163	101	111	M8	6	9	380	218	156,5	28	15	44,5	76	16	35	20	—
82E63-141__00	30	173	163	101	111	M8	6	9	380	218	156,5	28	21,5	44,5	76	16	35	20	12

Medium: air, max. 6 bar
 Operation with oil-free air is permissible
 CAD and design templates available upon request

Wiring diagrams of the electrical sensing system

