

Series 8031 Product Overview

Features:

- Fully enclosed straight line action clamp for the dirtiest environments
- Compact design with high holding capacity
- Sensor ready for round style sensors

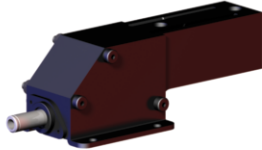
Applications:

- Assembly
- Welding

Also Available:

See page 8.1 for spindle accessories
See page 13.1 for sensing options

8031 ⓘ



Series 8031 Technical Information, Holding Capacities, Standard Clamp Dimensions

Model	Maximum Holding Capacity	Max. Exerting Force @ 5bar [72PSI]	Plunger Travel	Plunger Thread	Weight	Port Size	Spindle Accessory (Not Supplied)
8031 ⓘ	[2000 lbf] 8900 N	[731 lbf] 3285 N	[0.75] 19,1	M8	[1.17lb] 2,58kg	1/8 NPT	225208-M

See Technical Appendix Section for details. ⓘ This item is available upon request

Max Cylinder Pressure: 10bar [145psig]*

Max Operating Temp: -10°C to 90°C [-14°F to 194°F]

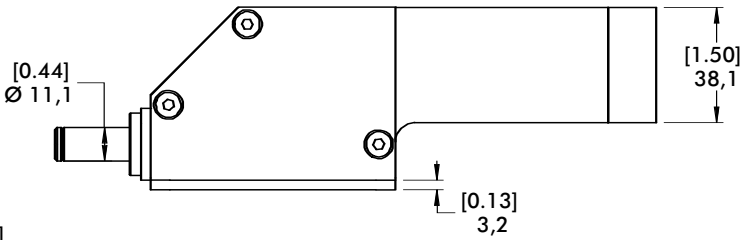
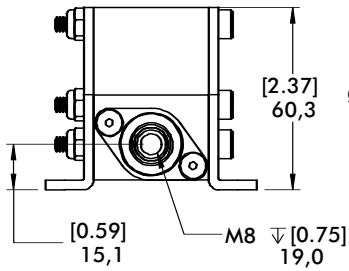
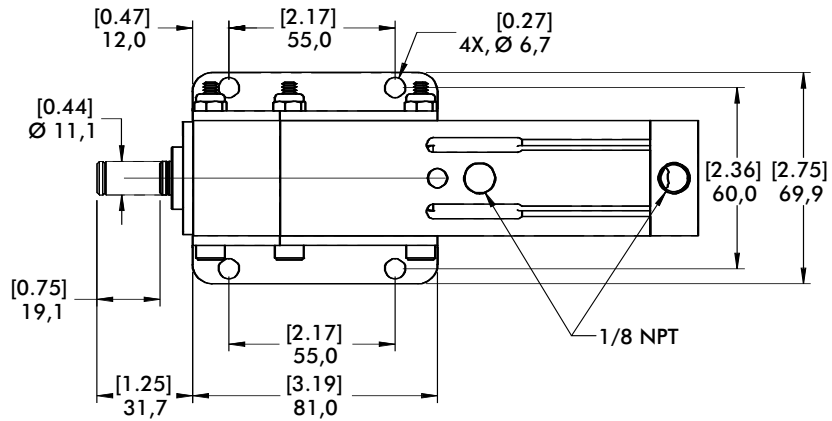
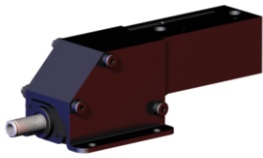
*In no case should the inlet pressure be high enough to create an exerting force that exceed's the clamps' holding capacity.

Sensor Accessories	Item Number
Round Reed Switch with Quick Disconnect	810169
Quick Disconnect 2M Extension Cable	CABL-010
Quick Disconnect 5M Extension Cable	CABL-013

See Pneumatic Accessories section for more options

Series **8031** Standard Clamp Dimensions

8031 ⓘ



mm [INCH]

 THIRD ANGLE PROJECTION

Model **8031**
 shown being used
 in a stir friction
 welding fixture

